



Oberammergau Passion Play 2010



**Tour of Europe
with Germany, Austria & Switzerland**

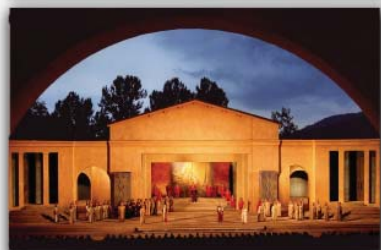
June 16–25, 2010

Hosted by Weldon Martens



About the Oberammergau Passion Play:

A Play of Life and Death, promised in a moment of mortal threat—so began the history of the Oberammergau Passion Play in 1633. In the midst of the horror of the 30 years' war, the dreaded plague swept across Europe. The citizens of Oberammergau attempted to seal themselves off from the outside world. When a homesick young man sneaked into the village and brought the disease with him, 84 residents died within 3 weeks. In desperation, Oberammergauers made a solemn vow that if God would stop the plague, out of gratitude, they would present a play depicting the life, suffering and Resurrection of Christ every 10 years for the duration of their existence. Miraculously the plague took no more lives in the village. True to their word, the villagers performed their first play at Pentecost in 1634, and have continued to do so to this day.



The Passion Play is performed every 10 years in the city of Oberammergau, Germany. The play takes place, in an open-air stage, where the sky and mountains are the back drop. More than 2,000 citizens make up the actors, singers, instrumentalist and stage technicians that bring the play to life. The year 2010 marks the 41st time the story will be presented in Oberammergau.

MTS  **TRAVEL**
mtstravel.com

124 E. Main St., 4th Fl.
Ephrata, PA 17522
(717) 721-7300
(800) 874-9330

Wednesday, June 16 Departure

Depart from Omaha, Nebraska on our overnight transatlantic flight to Frankfurt, Germany.

Thursday, June 17 Frankfurt, Germany

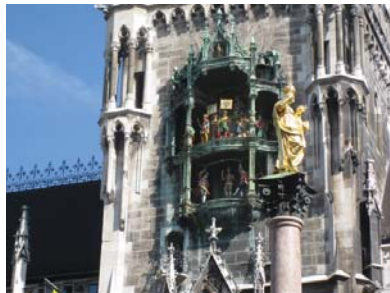
Arrive at Frankfurt Airport this morning, where we will meet our English-speaking tour escort. Enjoy a scenic tour of Frankfurt as we make our way to Koblenz, picturesquely situated along the Rhine River. Dinner and overnight in Koblenz. (D)

Friday, June 18 Koblenz – Rothenburg ob der Tauber

Board a steamer this morning for a cruise on the Rhine River, passing many vineyards as well as ruins of castles perched high on the hills. After disembarking the steamer, continue by motorcoach to Rothenburg ob der Tauber, an old Franconian city, with well preserved walls and towers. Founded in 5 B.C., this town has kept its typical 16th century look through strict preservation laws since the mid-1800's. The remainder of the day is free to explore this beautiful town on our own. Dinner and overnight in Rothenburg. (B, D)

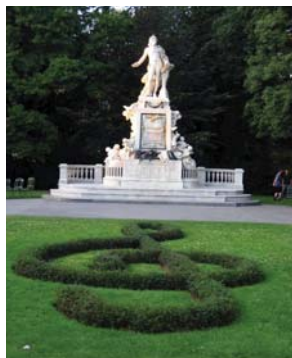


Saturday, June 19 Rothenburg – Munich



Board the motorcoach for a beautiful drive along the Romantic Road, through the quaint villages of Nördlingen and Dinkelsbühl, arriving in Munich, the capital of Bavaria. Enjoy a walking tour of Munich, including the Church of our Lady (Frauenkirche Cathedral), the beautifully restored St. Peter's Church, and time to wander on your own through the wonderful open-air Viktualienmarkt, with stalls that offer the freshest fruits and vegetables in Munich, along with traditional Bavarian Schweinshax'n and Speck, seafood, delicious cheeses, various herbs, and many other foods and crafts. Enjoy a special dinner at the Ratskeller, a popular traditional beer hall and restaurant located in the basement of the Rathaus (Town Hall). Overnight in Munich. (B, D)

Sunday, June 20 Munich – Salzburg



Travel through the Austrian Alps into Austria to Salzburg, the birthplace of Mozart and the city of "The Sound of Music." A pleasant stroll with your local guide takes you through the historic center. Admire the exquisite Mirabell Gardens, the Salzburg Cathedral, St. Peter's Churchyard, Mozart's birthplace, and several scenes

made famous through "The Sound of Music." Then enjoy the remainder of the day at leisure in the Getreidegasse, Salzburg's beautiful pedestrian shopping area. You might wish to take the funicular to the Salzburg fortress, which looks down over the beautiful old city. Dinner and overnight in Salzburg. (B, D)

Monday, June 21

Salzburg – Oberammergau



Depart Salzburg and travel on the Romantic Road through the beautiful Bavarian countryside. Pass the picturesque Church in the Meadow of Wies, and have a special photo opportunity of Neuschwanstein fairytale castle, well-known to Americans as Sleeping Beauty's Castle at Disneyland! We will also visit nearby Linderhof Castle. Both castles were built by King Ludwig II. Completed in 1878, Linderhof was the only one of Ludwig's

three castles that was completely finished. Continue our journey to Oberammergau for dinner and overnight. (B, D)

Tuesday, June 22

Oberammergau Passion Play

The history of the Passion Play at Oberammergau goes back to 1634, when the quaint alpine village of Oberammergau was threatened by the deadly disease known as the Black Plague that scourged Europe, killing two-thirds of the population of Germany. The people of Oberammergau pledged to perform the Passion Play as a sign of their repentance and remorse over the suffering and death of Jesus Christ. The chronicles relate that from the day the people gathered around the cross to swear their sacred vow, no further person died of the plague. Since that date, the play has been performed every ten years.



Spend a morning at leisure in Oberammergau. You will enjoy the many houses that are beautifully painted with fairytale scenes and the shops of its excellent "Herrgottschnitzer" (woodcarvers specializing in religious figures). The Passion Play performance begins after lunch at 2:30 in the afternoon. This Play is performed by local villagers—often roles are handed down within families from generation to generation. Dinner is included during a three-hour break in the late afternoon from 5–8 pm, and the performance lasts until 10:30. Overnight in Oberammergau. (B,L,D)

Wednesday, June 23 Oberammergau – Innsbruck



Say farewell to Oberammergau and travel south through the Austrian Alps to Innsbruck, home of the Winter Olympics in 1964 and 1976. Discover 800 years of Imperial history

on a tour of Innsbruck, including the "Golden Roof," the City Tower, the Helblinghaus, St. Jacobs Cathedral, the Imperial Palace and the Court Church, which are all within walking distance. Drive to nearby Swarovski Crystal World, opened in 1995 to enable people to experience the phenomenon of crystal. In the evening, attend a local performance of typical Austrian folklore dances. (B, D)



Thursday, June 24

Innsbruck - Zurich



We begin today with a drive through the small principality of Liechtenstein, with a stop in Vaduz, its capital, to view the Vaduz Castle high on a hill overlooking the city. Continue to Zurich, which was at the heartbeat of the Ana-

baptist story during the Reformation. Visit Grossmünster Cathedral, where Ulrich Zwingli preached and the home of Conrad Grebel and the Limmat River, where Felix Manz was drowned. Walk through fields to the Cave of the Anabaptists, high above Zurich near Wappenswil. Continue to Schaffhausen to see the spectacular Rhine Falls, Europe's largest waterfall. Dinner and overnight in Zurich. (B, D)

Friday, June 25

Zurich – USA

Leave the hotel early this morning for travel to the Zurich Airport for the return flight to the U.S. *Auf wiedersehen!*

Estimated Tour Price: \$4,650 based on double occupancy

NOTE: The tour price is based on estimated rates and fares for 2010 and is subject to change. All efforts have been made to offer realistic pricing.

Tour Price Includes:

- Round trip air fare
- Airline taxes and fuel surcharges
- Accommodations in four-star hotels, or similar
- Meals as indicated by B=Breakfast, L=Lunch and D=Dinner
- Oberammergau Passion Play ticket package, including English Program Playbook and admission to the Oberammergau Museum
- Sightseeing and entrance fees as indicated in itinerary
- Hotel service charges, local taxes and portorage
- Tips to guides, drivers and hotel staff
- **Oberammergau accommodations are located in the village, within walking distance of the Passion Play Theatre**
- Special dinners in Munich and Innsbruck
- Services of experienced, English-speaking Tour Director and licensed guides
- Transportation in deluxe air-conditioned motor coach

*Single rooms for the two nights in Oberammergau are available on a limited basis and cannot be guaranteed. If a single room is not available, you may be required to share a room for these two nights or pay an additional supplement.

For further information, contact:

Weldon Martens

151 18th Street

Henderson, NE 68371

402-723-4565 (Church)

402-723-4878 (Home)

wmartens@mainstaycomm.net

Travel Arrangements by:



124 East Main Street, 4th Floor

Ephrata, PA 17522

Tel: (800) 418-2929, ext. 81376

Fax: (717) 733-1009

E-mail: pamm@mtstravel.com



Tour Features and Conditions

NOTE: All rates and fares are based on prices and currency exchange rates in effect at the time of printing (October 2008) and are subject to change prior to final payment. Additional fees will be charged for individual deviations from the group itinerary. Tour price is based on a minimum of 40 persons traveling together.

Please read all Tour Features and Conditions carefully. Payment of tour deposit constitutes acceptance of these conditions.

Air Transportation: Air transportation is restricted to the services of any IATA carrier, in economy class based on non-refundable fare. Travelers are responsible to provide their names as they appear in their passport. Ticketing will be made 90 days prior to departure, after which there will be a charge for name corrections. Tour price includes current airline taxes and fuel surcharges, which are subject to change until ticketed. *Tour participants are responsible for any increase in airline taxes or fuel surcharges imposed by the airline.*

Accommodations: Based on two persons sharing a room in accommodations listed in itinerary, or similar, with private facilities, including service charges and taxes. Single rooms in Oberammergau are extremely limited and are available on request only. Triple rates are not available. *If a passenger cannot supply a roommate, the passenger is responsible for the additional charge.*

Meals: In-flight meals and snacks are served according to airline policy. Breakfast and dinner will be provided daily. Opportunity will be given for lunches that are not included to be secured by tour members, at their own expense. Beverages with meals are not included.

Transfers and Baggage: Transfers between airports and hotels upon arrival and departure are included in the tour price, including handling of one medium-sized suitcase per person, not exceeding 62 dimensional inches (length plus width plus height) or weighing more than a maximum of 50 pounds. *Due to limited luggage storage space on motorcoaches, it is important that each person bring only ONE piece of checked baggage. In addition, a flight bag or overnight case may be taken, which must be handled by the passenger at all times. Baggage allowance is subject to change according to airline policy.*

Sightseeing and Entrance Fees: Included as shown in itinerary with English-speaking Tour Manager and including entrance fees where applicable.

Tips and Taxes: Service charges and taxes on accommodations are included. Tips to guides, drivers, and hotel staff are included. Tips for personal services are not included and are at tour member's own expense.

Not Included: Passport fee, travel protection insurance, most lunches, beverages with lunches and dinners, airport portage in the U.S., and expenses of a purely personal nature are not included.

Deposit and Payment: An initial deposit of \$400 (non-refundable) per person is required for enrollment on this tour. A second deposit of \$600 (non-refundable) plus a copy of your passport is due on March 15, 2009. If you do not have a passport, please let us know. Third deposit of \$1,000 is due on July 15, 2009. Final payment of the outstanding balance is due 100 days prior to departure. Checks should be made payable to MTS TRAVEL. You will be invoiced for the additional deposits and the final payment.

MTS Cancellation Conditions: Cancellation after enrollment will result in a penalty of \$400 per person. From March 15, 2009 to July 15, 2009, the penalty is \$1000 per person. From July 16, 2009 and 100 days prior to departure, cancellation fee is \$2,000 per person. An cancellations received within 100 days of departure will incur a maximum of 100% of the tour price, depending on charges imposed by airlines, hotels and the ability

to re-sell the Passion Play tickets and accommodations. Cancellations are required in writing by letter, fax or email.

Protect Your Investment: If you purchase the protection plan upon enrollment with your deposit, any restriction on pre-existing conditions is waived. If protection plan is purchased after the deposit is received, all coverage is subject to exclusion of pre-existing conditions. Trip cancellation and interruption protection is made available to tour members at a cost of \$320 per person. You will receive a detailed description of the protection plan, which you will have ten days to review. Certain conditions, exclusions and limitations apply as set out in the Evidence of Coverage and Confirmation of Coverage. Following is a brief description:

- This protection plan will cover you for cancellation fees if you need to cancel because of death, injury or illness to you, your traveling companion or your immediate family member.
- Trip Interruption or Delay
- Medical Evacuation
- Medical Expenses
- Lost, stolen or damaged baggage

A valid passport is required. If you do not have a passport, you should apply for one immediately. Information on obtaining a passport will be provided upon receipt of deposit. Passports must be valid for six (6) months beyond your return tour date. If you now have a passport, please verify that its validity.

The itinerary as outlined is an indication of sequence and sites to be included in the tour program. However, the tour operator reserves the right to alter or change the itinerary and/or the sites included should it be deemed necessary due to local conditions, time restrictions, or other circumstances.

In the ever-changing world situation, MTS TRAVEL recommends personal monitoring of news about your destination. For the latest country information from the U.S. Dept. of State, please visit www.mtstravel.com and click "U.S. State Department Travel Warnings" in the middle of our home page.

Photographs: MTS TRAVEL reserves all rights to publish in printed media or the web (mtstravel.com) photographs taken during the tour. By participating in the tour you agree to grant permission to MTS TRAVEL to use photographs in which you may appear.

Guests with disabilities or dietary restrictions **should inquire in advance** about whether their needs can be accommodated.

Responsibility

Menno Travel Service, Inc., D/B/AMTS TRAVEL, with its officers and staff act only as agents for the various companies whose accommodations are utilized. They assume no responsibility or liability in connection with the services of any train, vessel, carriage, automobile, airplane or other conveyance, which will be used either wholly or in part. Neither will they be responsible for any act, error, omission, or any injury, loss, accident, or any delays, which may be occasioned by reason of, defect in any vehicle or through neglect or default of any company or persons engaged in the conveying of passengers. The steamer, airplane services or that of any other conveyance, sickness, accident, weather, strikes, war, quarantine or other causes and all such losses or expenses must be borne by the passenger. Prices and schedules appearing in this brochure are based on current schedules and tariff rates and are subject to change without notice. The tour operator reserve the right to modify the itinerary where deemed necessary or caused by changes in air schedules. The airlines and/or other transportation companies concerned are not to be held responsible for any act, omission or event during the time passengers are not aboard their plane or conveyance. The passage contract in use by the airlines concerned, when issued, shall constitute the sole contract between the airlines and purchaser of tours and/or the passenger.

CST 2013363-40